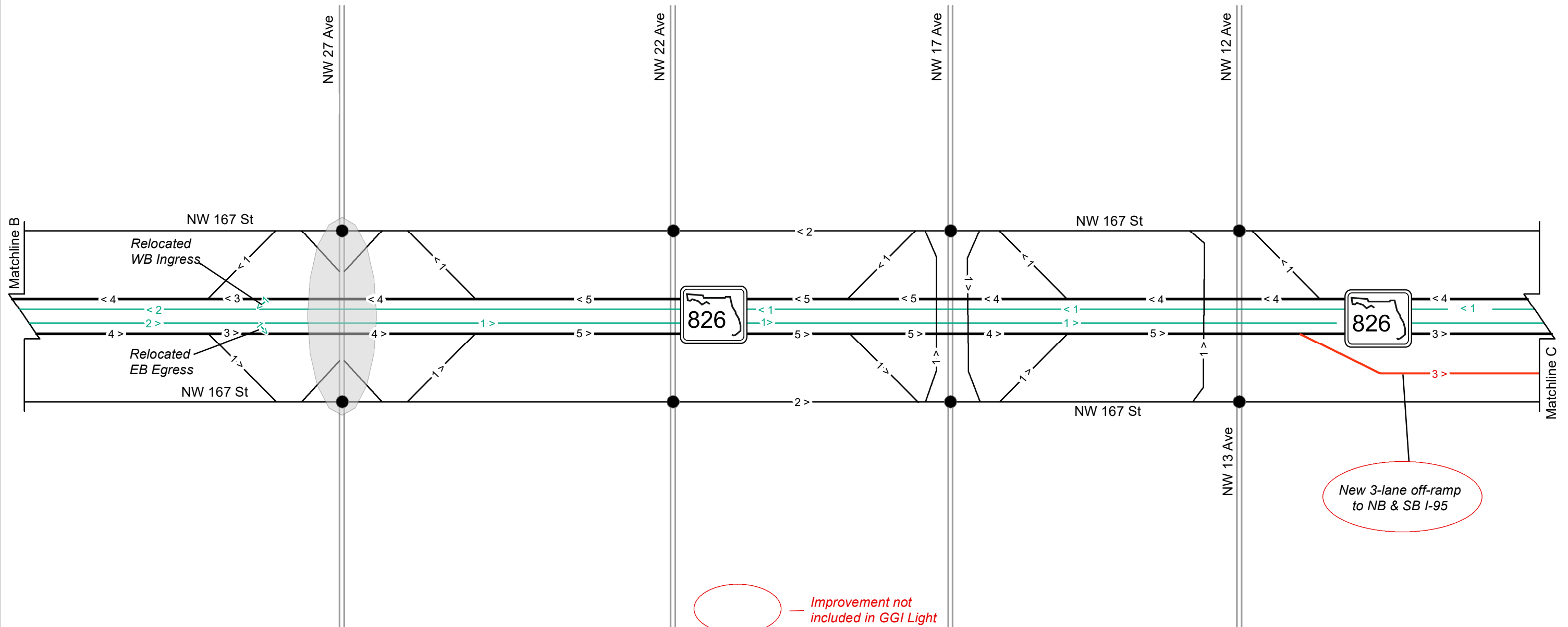




N.T.S.



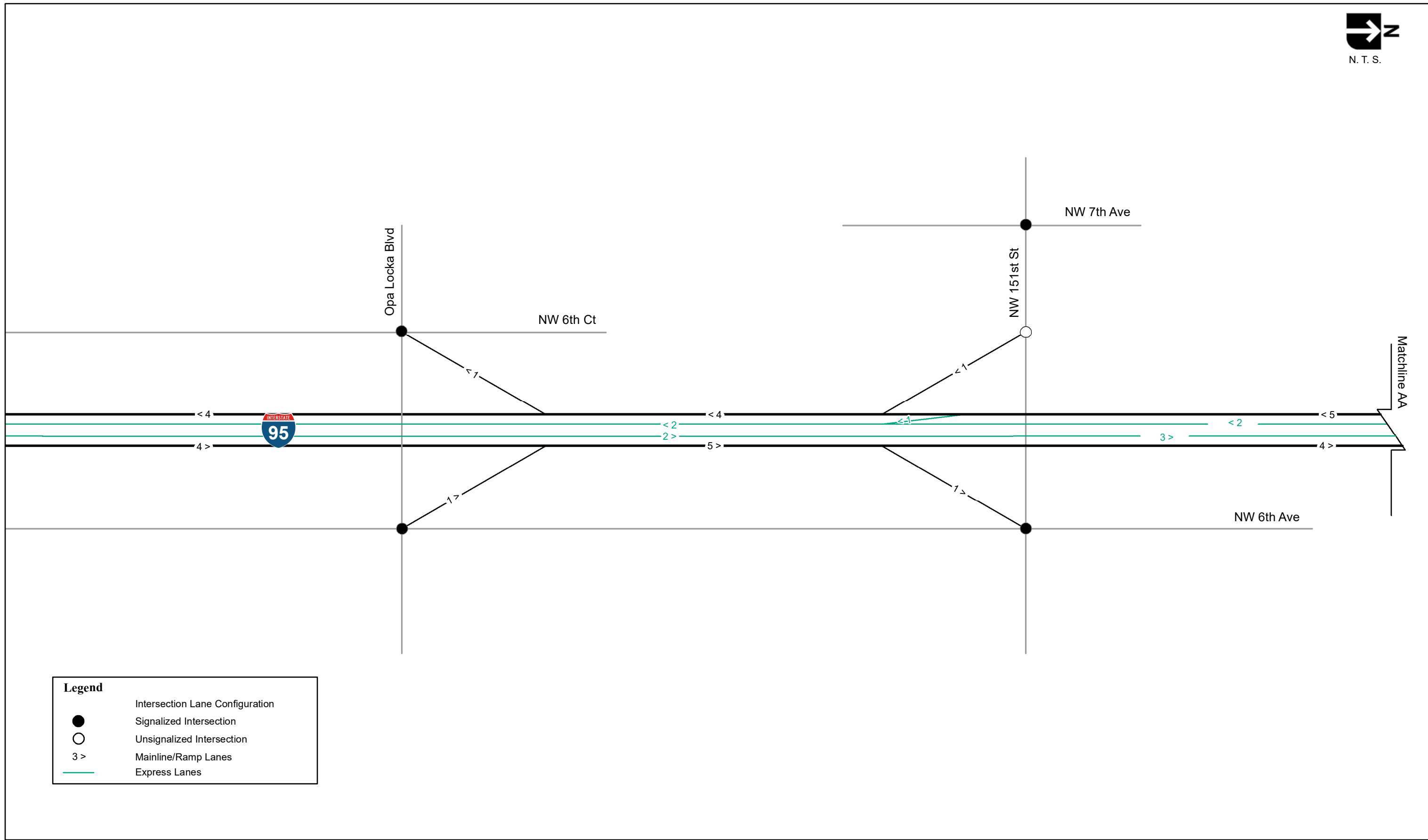
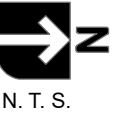
Improvement not included in GGI Light

Legend

- Signalized Intersection
- Unsignalized Intersection
- 3 > Mainline/Ramp Lanes
- Express Lanes

Denotes SPUI Configuration

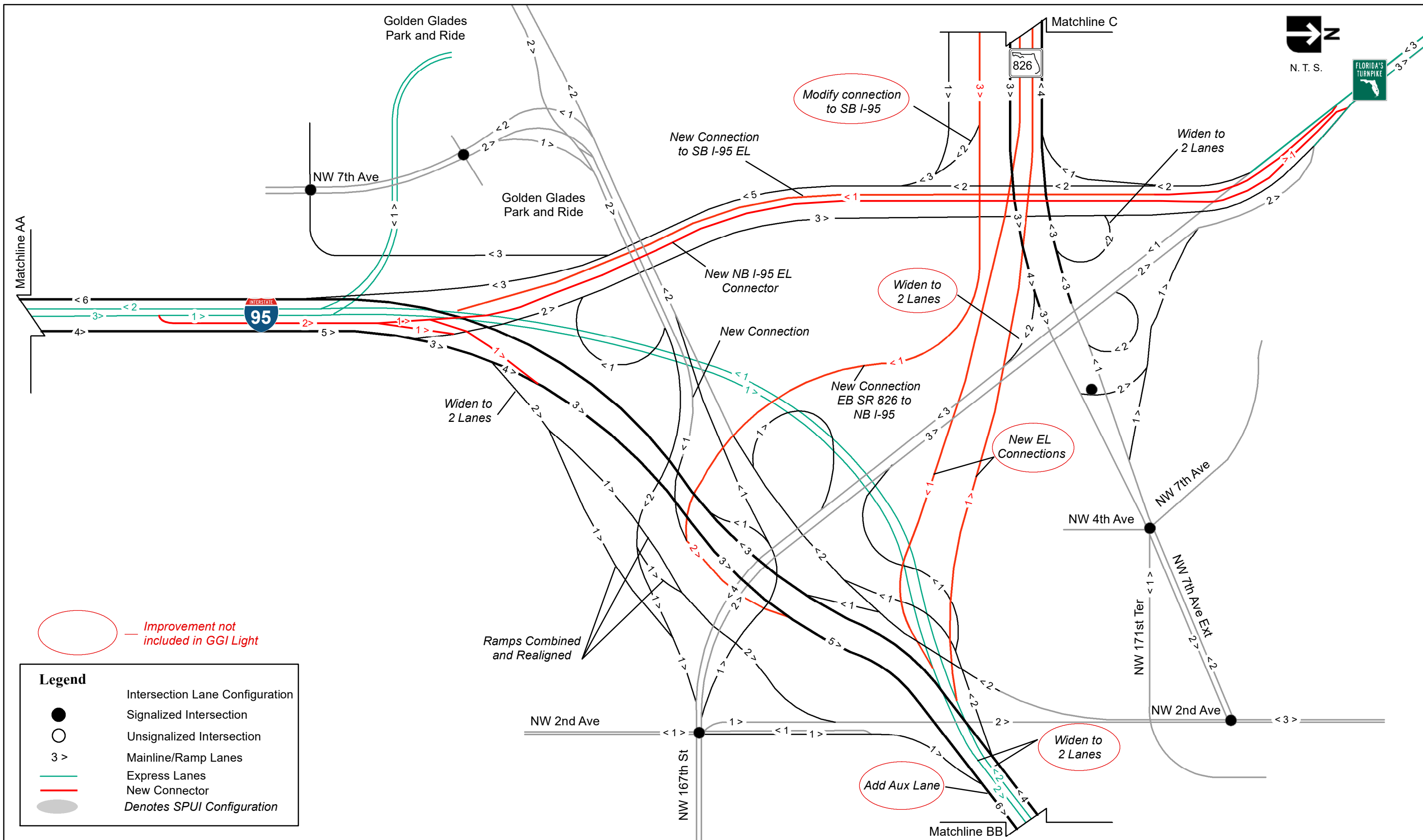


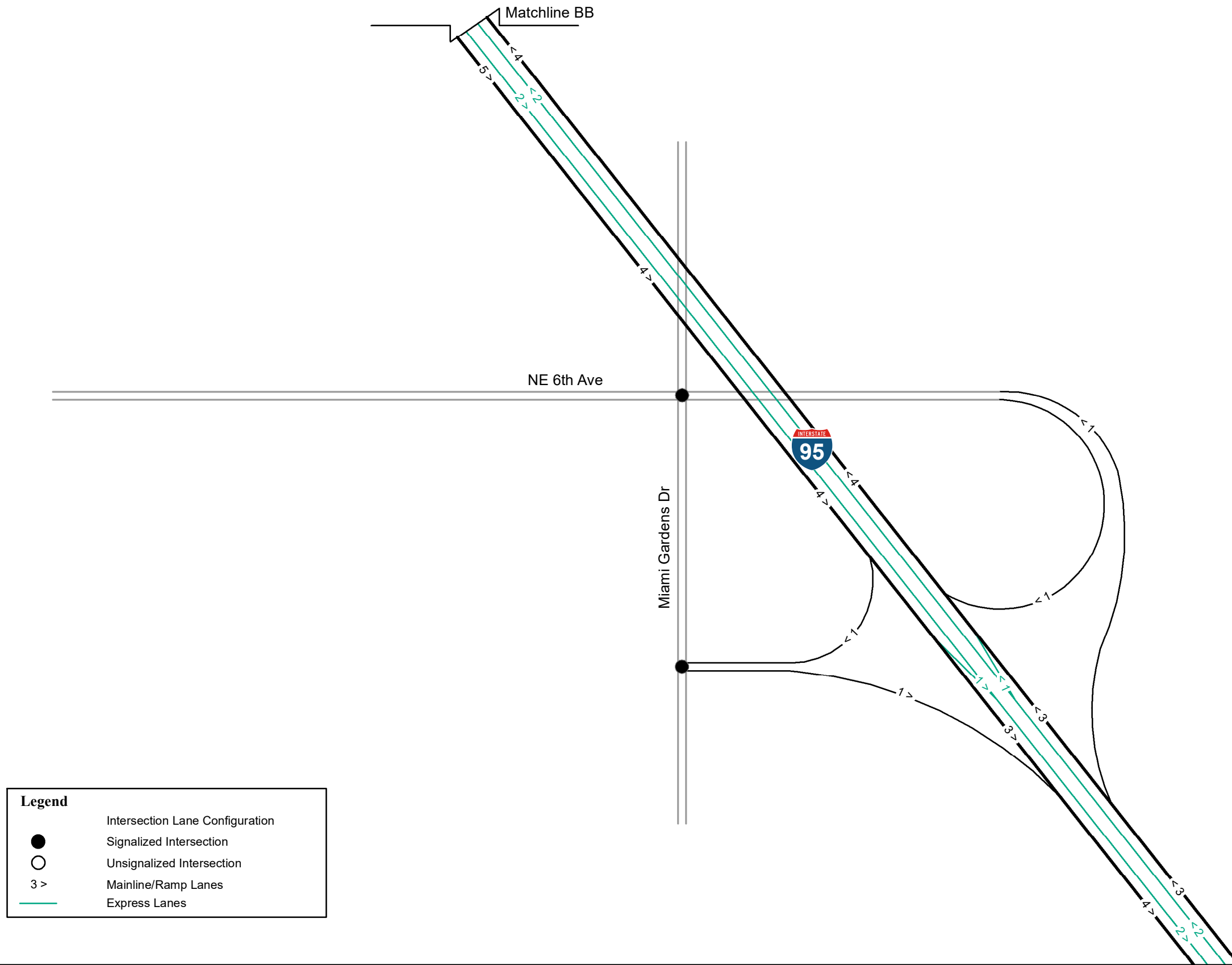
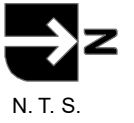


Legend

- Intersection Lane Configuration
- Signalized Intersection
- Unsignalized Intersection
- 3 > Mainline/Ramp Lanes
- Express Lanes





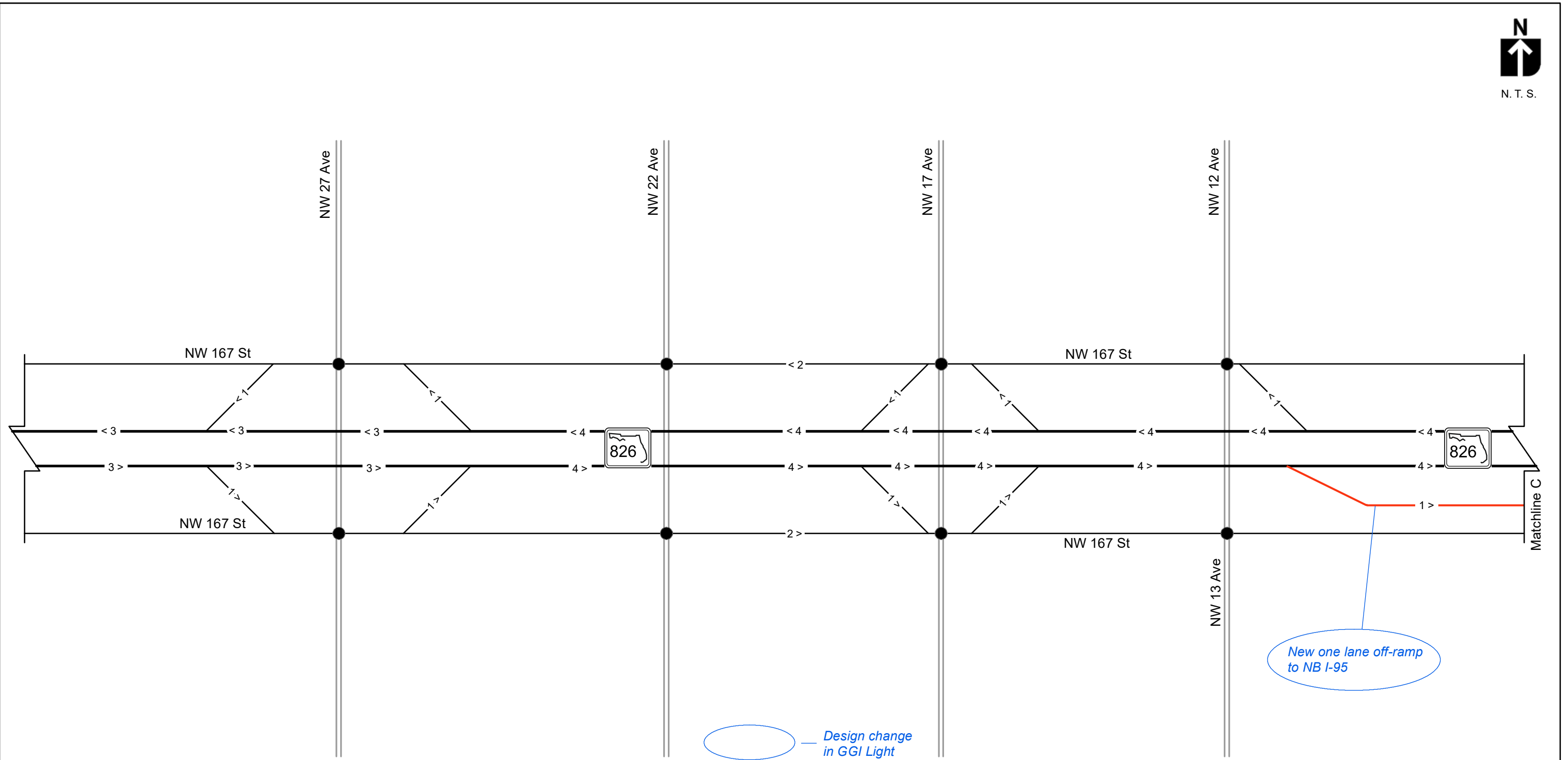


Legend	
●	Intersection Lane Configuration
●	Signalized Intersection
○	Unsignalized Intersection
3 >	Mainline/Ramp Lanes
—	Express Lanes





N. T. S.



Design change in GGI Light

New one lane off-ramp to NB I-95

Legend

- Intersection Lane Configuration
- Signalized Intersection
- Unsignalized Intersection
- 3 > Mainline/Ramp Lanes



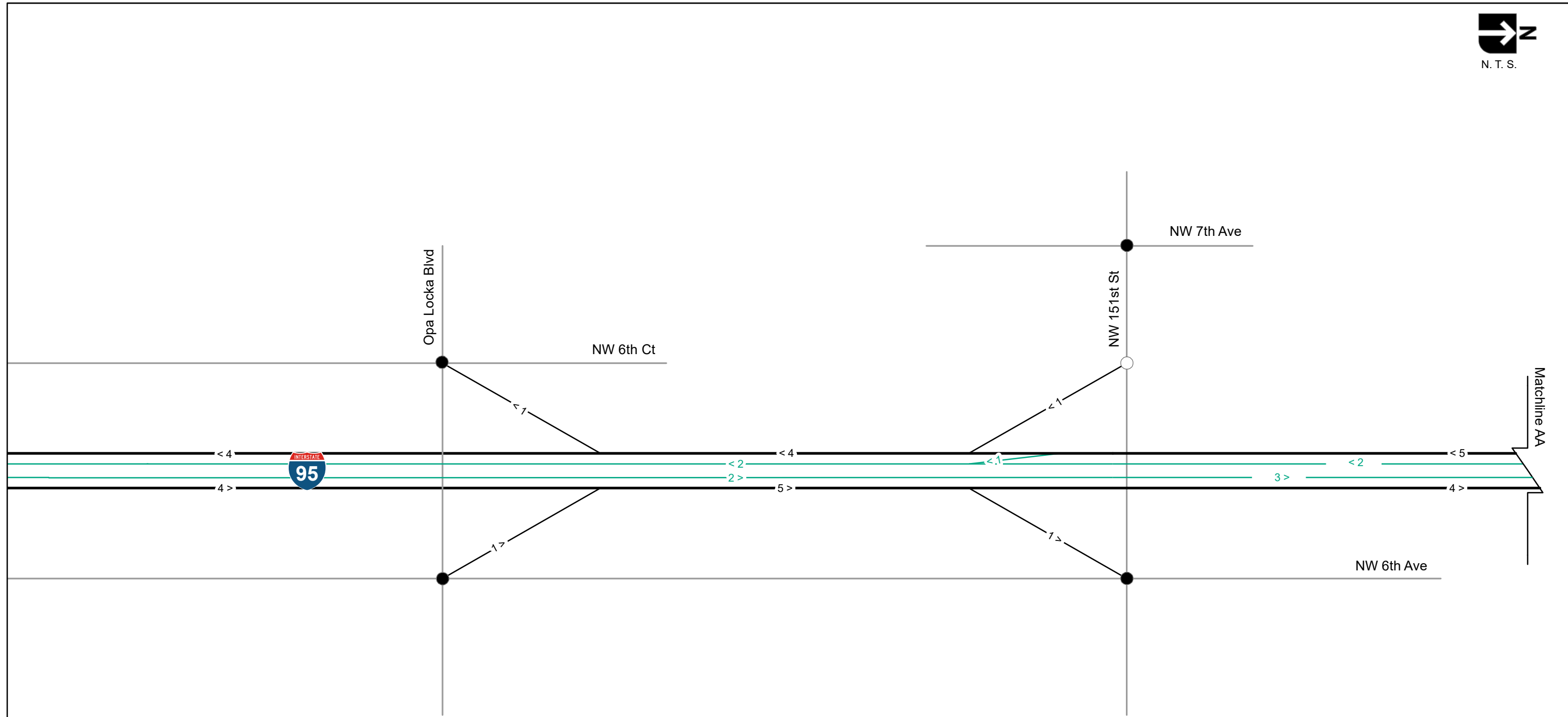
SR 826/Palmetto Expressway PD&E Study
From SR 93/I-75 to Golden Glades Interchange

ETDM NO: 11241
FM.: 418423-1-22-01

GGI Light Design Concept - Line Diagram

Figure 3-4

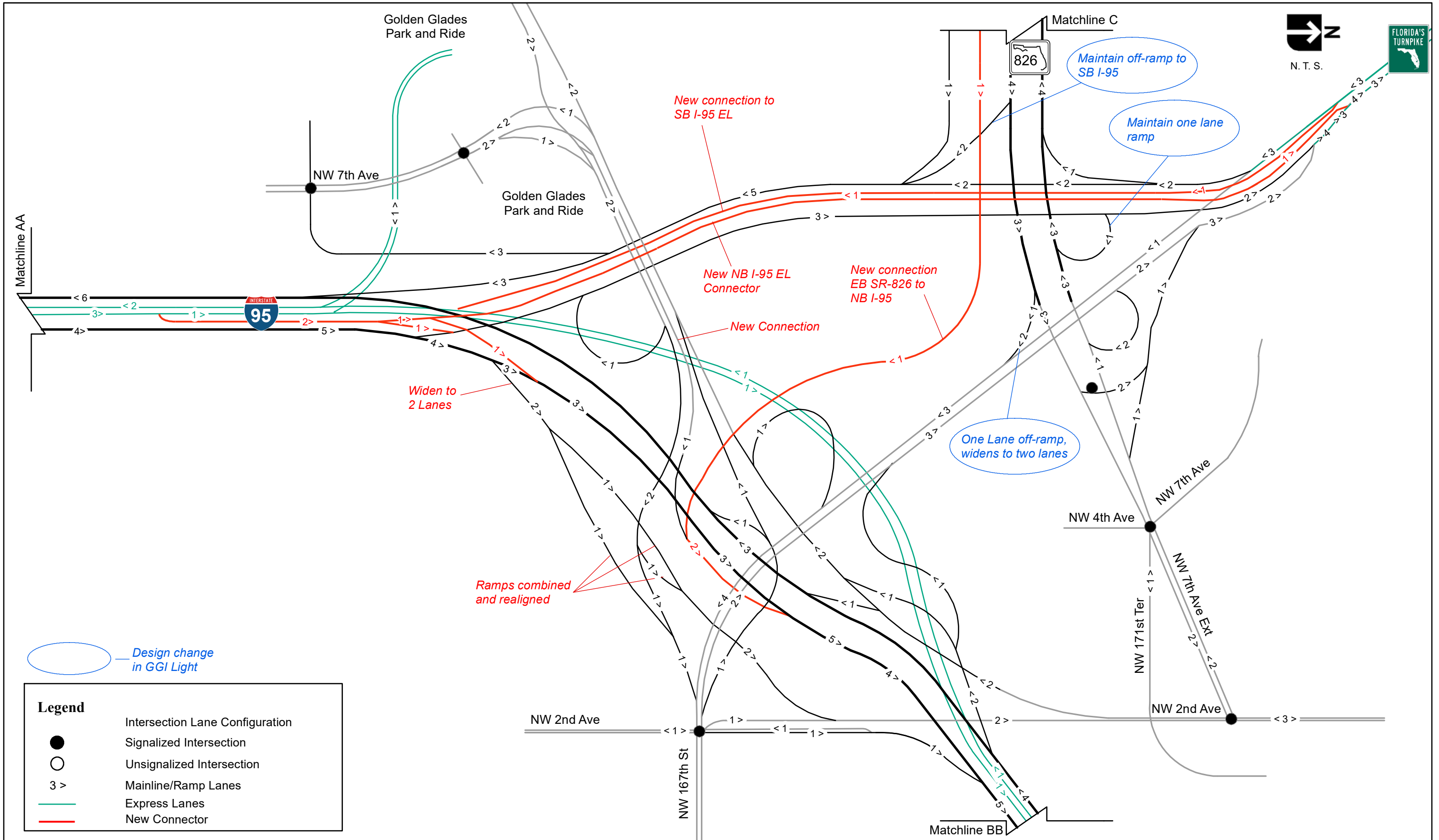
Sheet 1 of 4

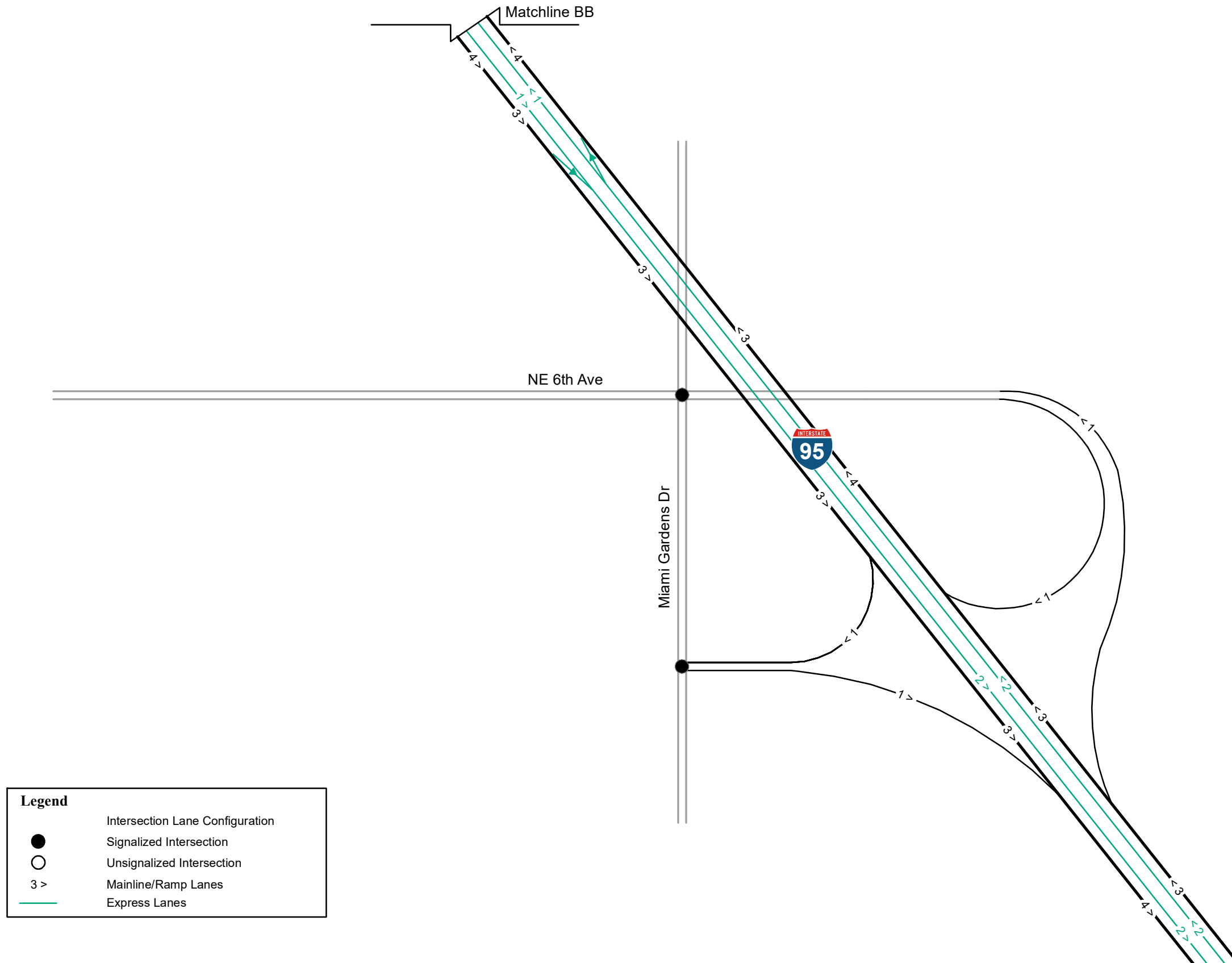


Legend

- Intersection Lane Configuration
- Signalized Intersection
- Unsignalized Intersection
- 3 > Mainline/Ramp Lanes
- Express Lanes







Legend

- Intersection Lane Configuration
- Signalized Intersection
- Unsignalized Intersection
- 3 > Mainline/Ramp Lanes
- Express Lanes





Concept across all networkwide performance measures including, total delay, total vehicle-miles travelled, average speed and unmet demand (latent demand).

- Safety analyses reveal that segments of the existing I-95 and SR 826 corridors experienced abnormally high crash rates during the 5-year period 2015 through 2019. If no improvements are implemented, the existing high crash rates will continue in the future. The segment of highest safety concern is along I-95 mainline from NW 151st Street to GGI. Excessive congestion and weaving activities are contributing causes for the high crash rates experienced within this segment of I-95. The proposed I-95/Turnpike Express Lane Connectors, per the GGI Light and GGI Ultimate Design Concepts, will improve safety within this segment of I-95 by reducing congestion and weaving activities. Similarly, the proposed new flyover for connecting EB SR 826 to NB I-95 (per GGI Light and GGI Ultimate) will reduce congestion and corresponding crash risk along SR 826. The proposed SR 826/I-95 Express Lanes connects (GGI Ultimate) will further reduce congestion and corresponding crash risk along SR 826.

Based on the above findings, the GGI Light Design Concept is offered as an interim improvement for the GGI Interchange. The GGI Ultimate Design Concept, per the current approved 2019 SIMR Re-evaluation, will remain along with all previously agreed commitments.